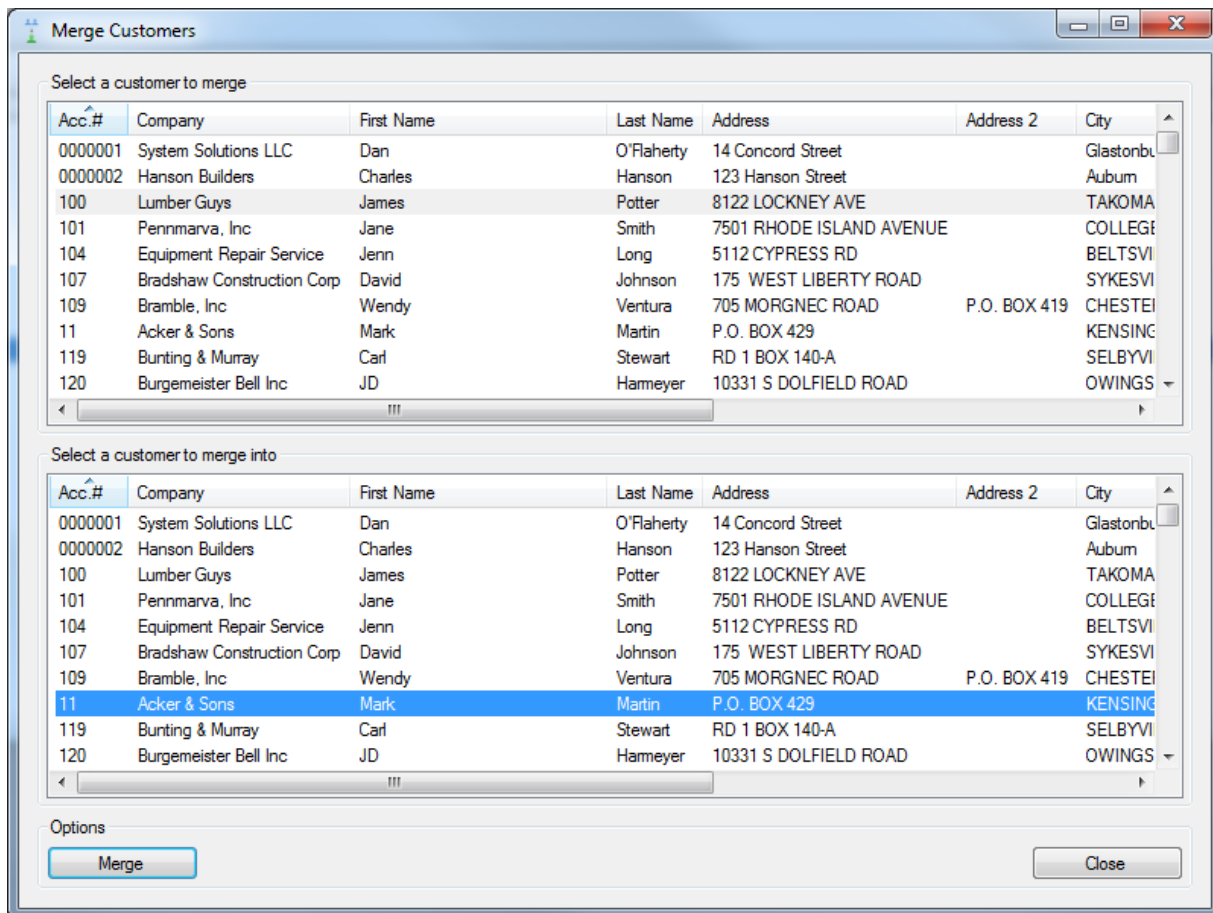


# RMS Merge Customers



- Allows user to select one customer and transfer their sales information to another
- Transferred data includes purchase history, account activity, total visits, total savings, and any vouchers balances
- 'From' customer deleted after transfer has been completed

## System Requirements

Microsoft RMS Version 2.0, Net 3.5, SQL 2005,  
Windows XP (Pro or Home), Windows Vista (Pro or Home) or Windows 7/8 (32-bit or 64-bit)

System Solutions LLC • 80 Eastern Blvd Suite 2 • Glastonbury, CT 06033  
(888) 816-8002

[www.syssolutionsllc.com](http://www.syssolutionsllc.com)