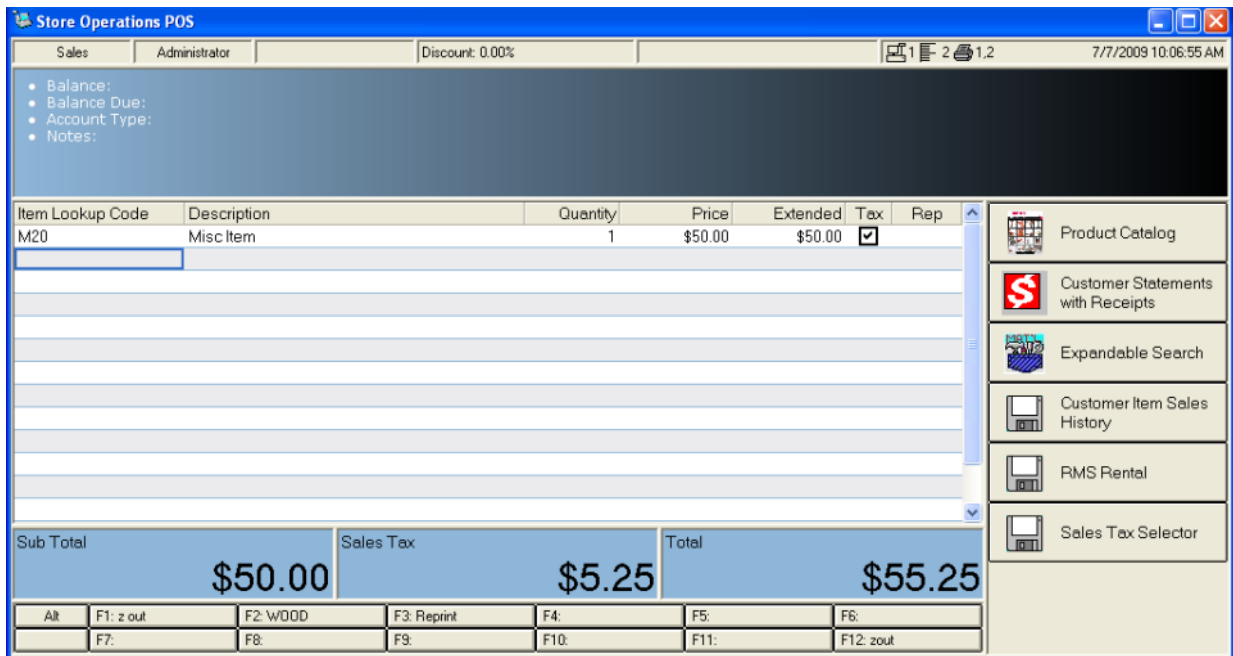


RMS Margin Based Cost of Goods



RMS Margin Based Cost of Goods add-on allows the merchant to sell miscellaneous items with the ability to set the cost of goods.

- Create items with a pre-set margin ie. M20 (20% margin), M25 (25% margin), etc.
- Prompt for price or override price at POS.
- Item's cost of goods will equal selling price minus margin.
- Example: Item M20 sold at a price of \$100.00 will have cost of goods set to \$80.00.

System Requirements

Microsoft RMS version 2.0, Net 2.0, SQL 2005,
Windows XP (Pro or Home), Windows Vista (Pro or Home) or Windows 7/8 (32-bit or 64-bit)

System Solutions • 80 Eastern Boulevard Suite 2 • Glastonbury, CT 06033
(888) 816-8002

<http://www.syssolutionsllc.com/>